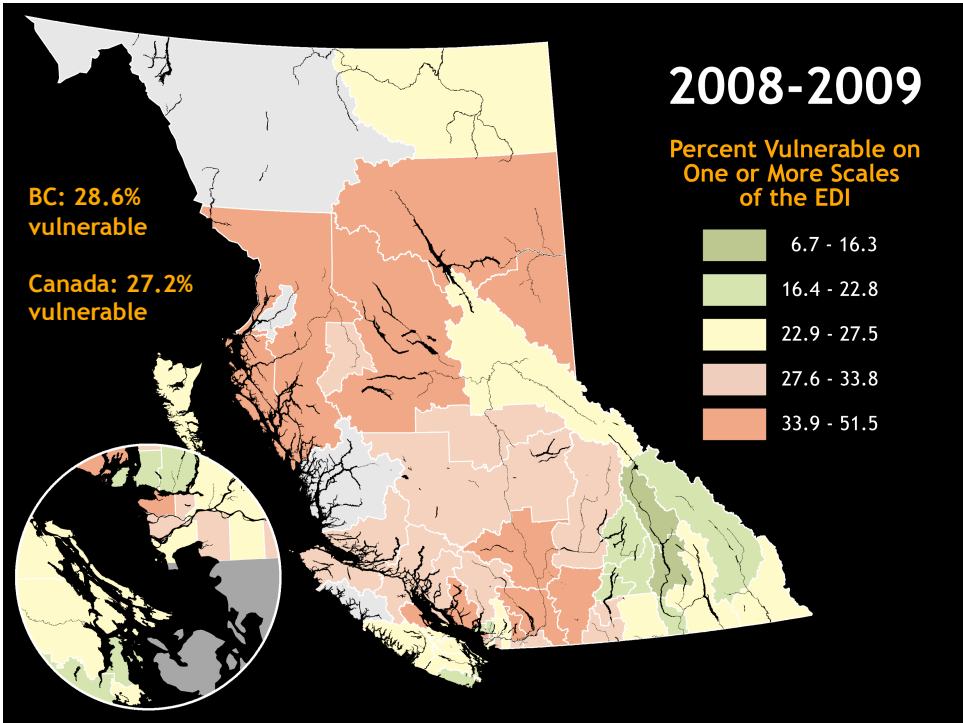


# Smart Family Policy: Measuring and Monitoring Its Development across Canada

Dr. Paul Kershaw  
University of British Columbia  
Human Early Learning Partnership

Prepared for:  
**EDI International Conference: Equity from the Start**  
June 17, 2010  
Hamilton, Ontario

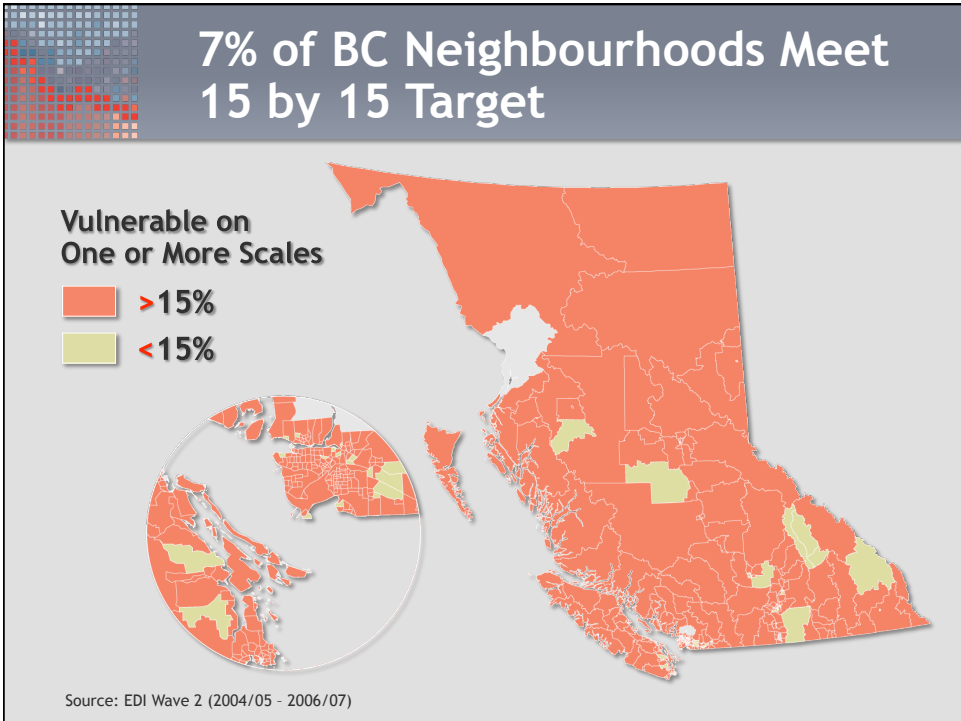


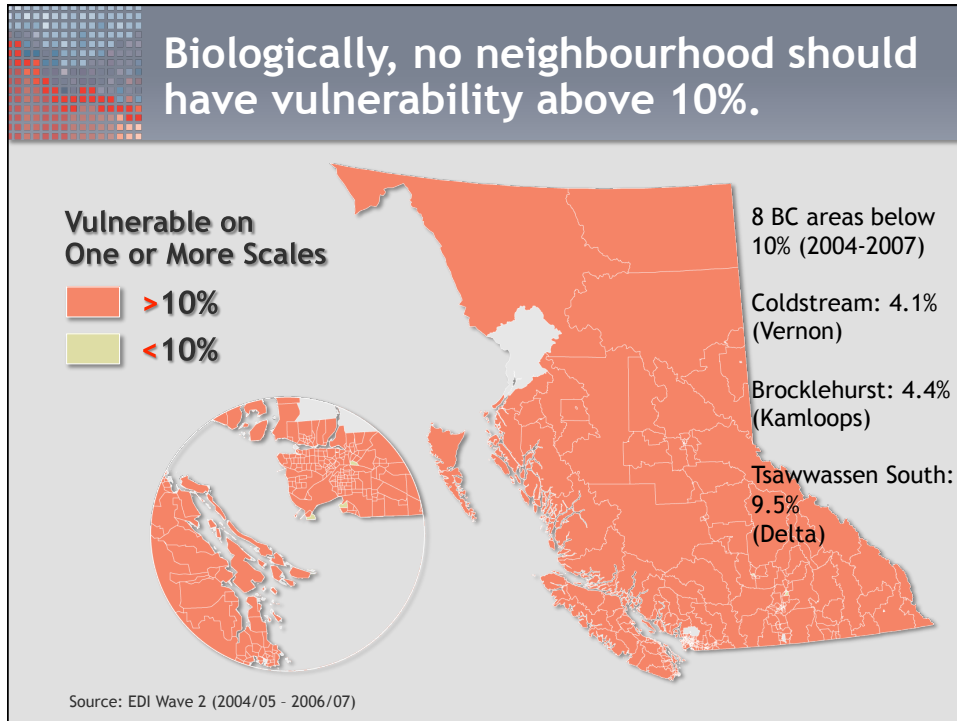
# Canada does not use family policy to synchronize earning and caring.

	2008 Family Policy	2008 Gender Gap
Country	Score/10	Ranking
Sweden	10	3
Norway	8	1
Finland	8	2
Denmark	8	7
France	8	15
New Zealand	6	5
Netherlands	5	9
UK	5	13
Germany	4	11
Switzerland	3	14
US	3	27
Australia	2	24
Ireland	1	8
Canada	1	31



Sources: UNICEF and World Economic Forum





## What areas across Canada meet the 15% and 10% targets?

- 34% increase in university grade achievement
- 31% reduction in crime
- reduced health ailments

What will it take for Canada to  
achieve these targets?

27.2% vulnerable?  
Most are not poor!

**Canadian Society is FAILING  
in fundamental ways!**

Time Poverty  
Service Poverty  
Income Poverty

**No systematic monitoring and reporting of family policy to support time, services and income**

Multiple levels of government involved in most countries.

In Canada, provinces don't report to federal government; and vice versa.

*Very* broad range of relevant policy areas: health, education, social assistance, housing, **taxation**, child care, parental leave, etc.

**Policy:  
Income & Resources**

## Net Disposable Income: Lone Mother with Toddler on Social Assistance (2008)

Canadian Currency  
(controlling for purchasing power parities)

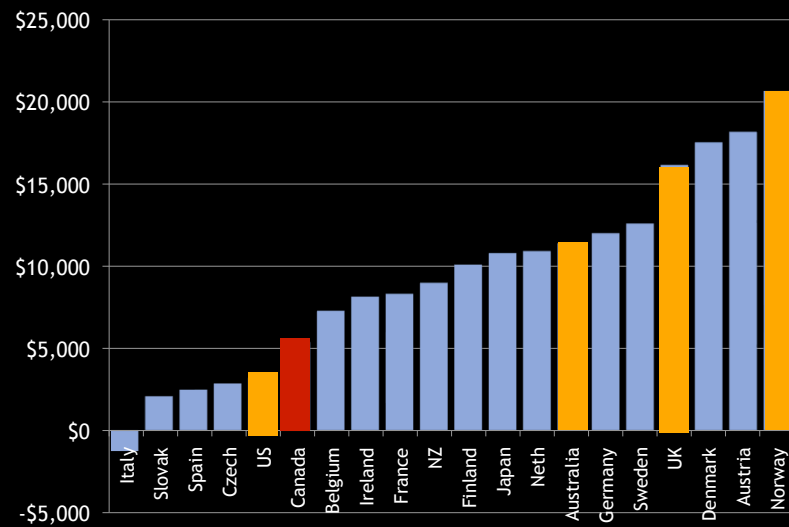
### INCOME

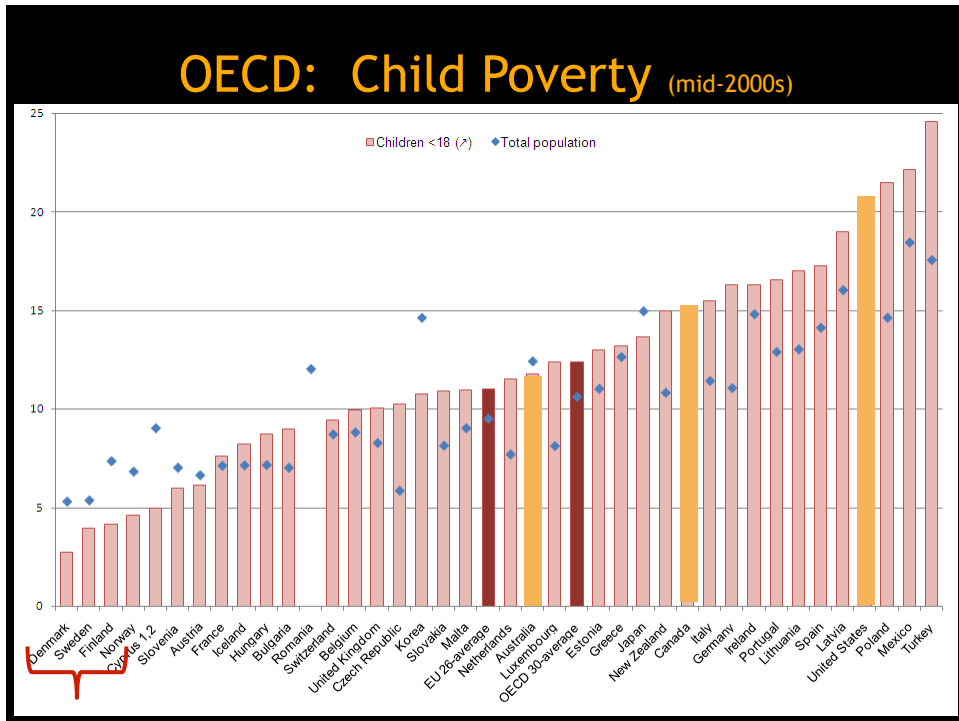
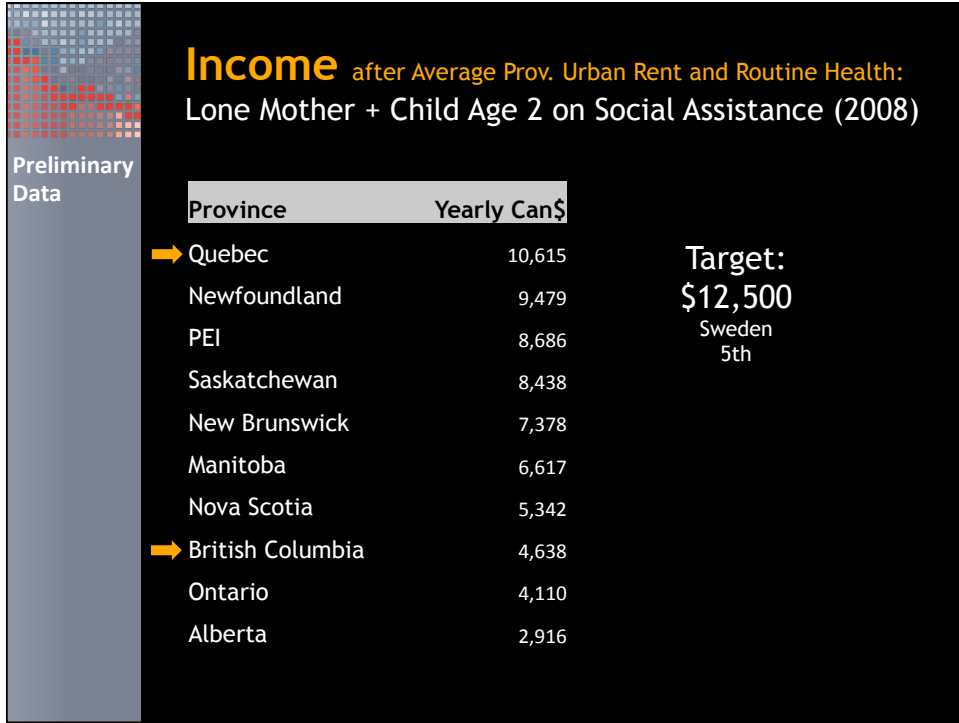
Income Assistance (less any housing support)

Norway	BC, Canada	Slovak
x	4,507	85

## NDI after housing and routine health care Lone Mother with Toddler on Income Assistance (2008)

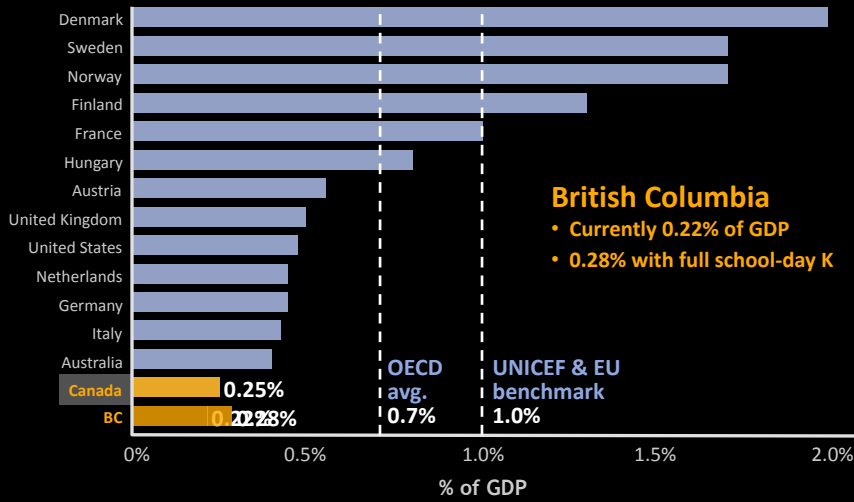
Canadian Currency  
(controlling for purchasing power parities)



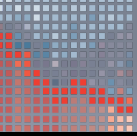


# Policy: Community Services

## Public expenditure on ECEC services (0-6 years) in selected OECD countries



Source: Adapted from Starting Strong II: Early Childhood Education and Care, September 2006, p.11



## Regulated Child Care Spaces

% of children for whom there is regulated space (2008)

Province	Quality	Children 0-5 for whom there is a regulated full or part-time centre based space (%)
Newfoundland & Labrador	?	17.3
Prince Edward Island	?	41.0
Nova Scotia	?	22.1
New Brunswick	?	19.9
Quebec	?	25.0
Ontario	?	19.6
Manitoba	?	20.6
<b>Saskatchewan</b>	?	<b>9.1</b>
Alberta	?	17.4
British Columbia	?	18.3
Northwest Territories	?	23.3
Nunavut	?	20.2
Yukon Territory	?	28.3

Source: The Big Picture, Early Childhood Education and Care in Canada 2008

## Net Earnings: F/T Caregiver of Toddler in One Earner Couple Shifts to F/T Employment at 1/2 Avg National Earnings (2008)

Canadian Currency  
(controlling for purchasing power parities)

	Quebec	BC	Sask
Gross Earnings: Parent 2	26,630	26,630	26,630

# Policy: Time to Care



**Parental Leave** **Child (from month 3 to 15)**  
(year: 2008) Parents both take 6 months to care. Disposable income relative to couple without children

**Preliminary Data**

Country	Year Can\$ (controlling for PPPs)
Canada (outside of Quebec)	-11,779

Target: \$-1,532

**Smart Family Policy: Additional Investment**

*All \$ millions unless otherwise noted*

Jurisdiction	Per capita %	Time and Resources 49% of Investment		Community Supports 51% of Investment		Total Additional Investment	Total as % of GDP
		Parental Leave	Income Supports	Early Childhood Education & Care (ECEC)	ECD Coalitions, Pregnancy, Parenting, Screening & Intervention		
Nfld/Lab	1.52%	68	95	262	11	430	1.37%
PEI	0.42%	19	26	37	3	86	1.82%
NS	2.82%	127	176	244	20	575	1.68%
NB	2.24%	101	140	186	16	446	1.63%
Quebec	23.28%	1,048	1,453	1,209	168	3,981	1.32%
Ontario	38.82%	1,747	2,423	3,828	281	8,208	1.39%
Manitoba	3.62%	163	226	333	26	762	1.50%
Sask	3.06%	138	191	532	22	927	1.44%
Alberta	10.76%	484	671	1,727	78	2,999	1.03%
BC	13.14%	591	820	1,554	95	3,082	1.55%
Yukon/NWT/Nun	0.34%	15	21	60	2	59	0.66%
Federal ECEC				500		500	
<b>Total Pan-Canadian</b>	<b>100%</b>	<b>\$4,501</b>	<b>\$6,242</b>	<b>10,471</b>	<b>\$723</b>	<b>\$21,937</b>	<b>1.37%</b>

Thank you.



- Paul Kershaw, Ph.D.
- The University of British Columbia
- College for Interdisciplinary Studies
- Human Early Learning Partnership (HELP)
- <http://www.earlylearning.ubc.ca/PaulKershaw.htm>
- e-mail: [paul.kershaw@ubc.ca](mailto:paul.kershaw@ubc.ca)

**15 by 15 available at: [www.earlylearning.ubc.ca](http://www.earlylearning.ubc.ca)**