

Australian Early Development Index

Early childhood development outcomes for Australia

Sally Brinkman, Senior Epidemiologist

AEDI Partnership
Sally Brinkman (ICHR), Prof Sven Silburn (Menzies), Prof Steve Zubrick,
Prof Frank Oberklaid, Dr Sharon Goldfeld, Mary Sayers (CCH)



An Australian Government Initiative



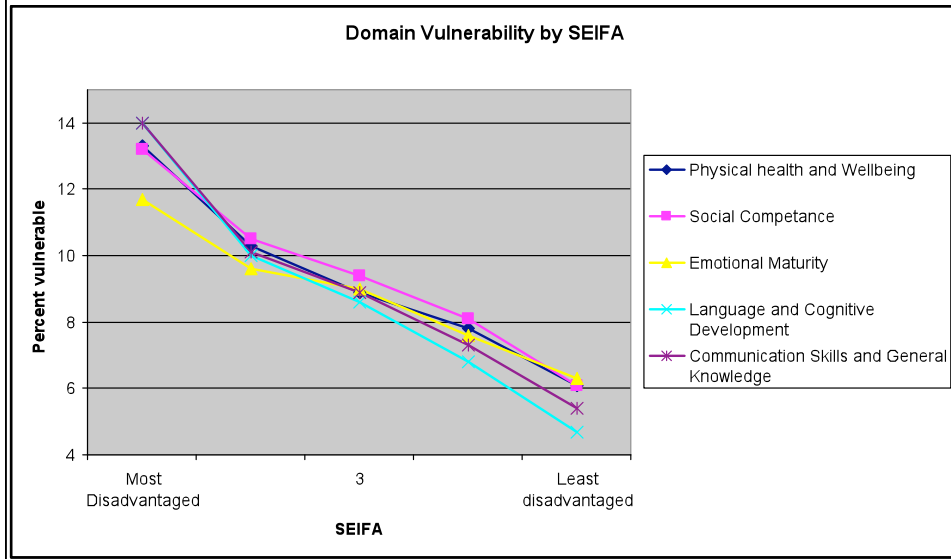
A summary of Australia's children

- Teachers reported there were 12,468 (4.8 per cent) Australian Indigenous (Aboriginal and Torres Strait Islander) children.
- 21.8 per cent of all Australian children (including Australian Indigenous children) spoke languages other than English in the home, with 241 different languages spoken.
- 6.6 per cent of children were born outside Australia in 190 different countries
- In the year before entering full-time school 85.2 % of Australian children were reported to be in care or education programs
- 4.4 per cent of children are reported as having chronic physical, intellectual and medical needs (special needs status).
 - 10.4 per cent of children were identified by teachers as requiring further assessment.



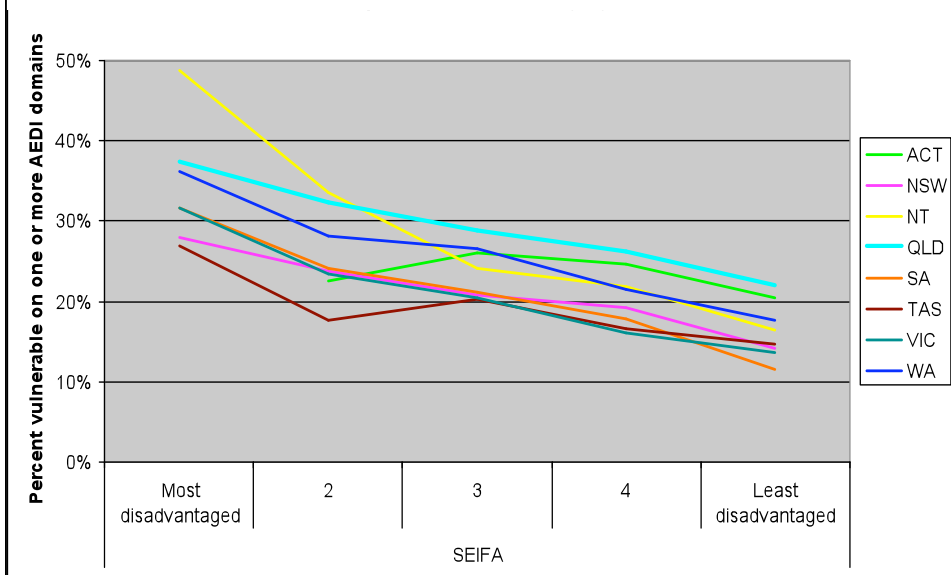
Domain comparison – vulnerability by SEIFA

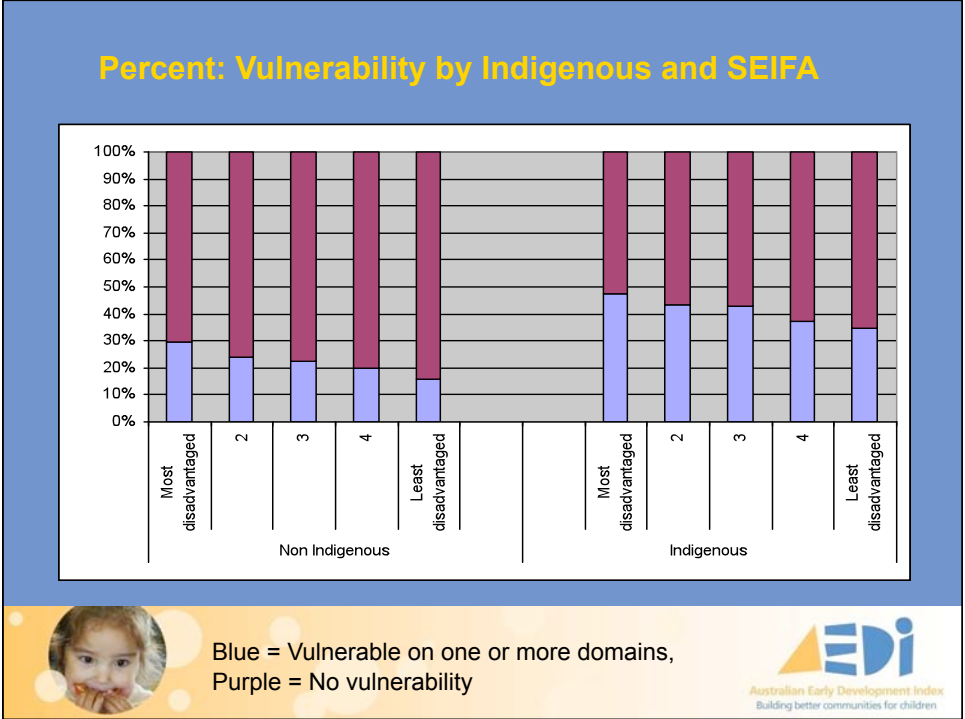
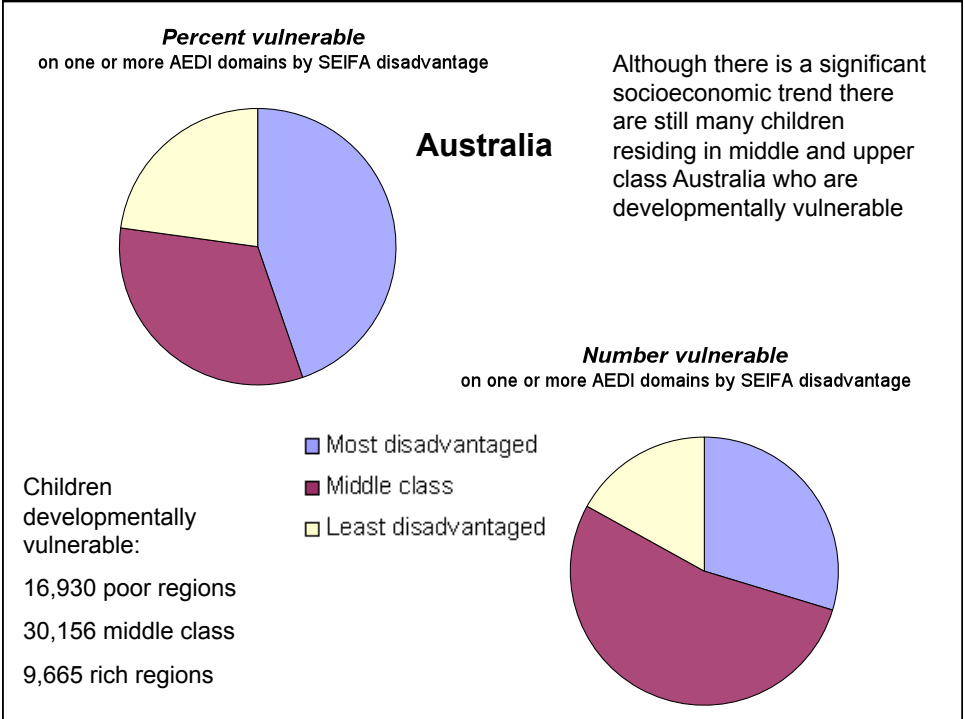
N=261,000



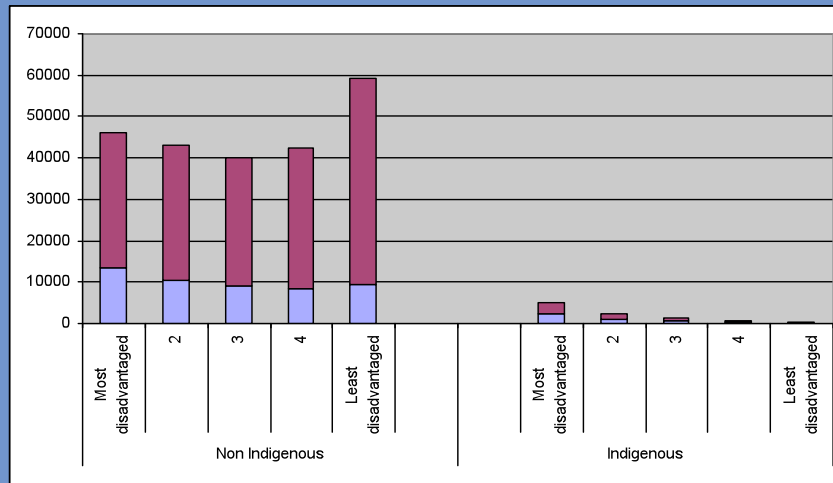
State comparison – vulnerability by SEIFA

N=261,000





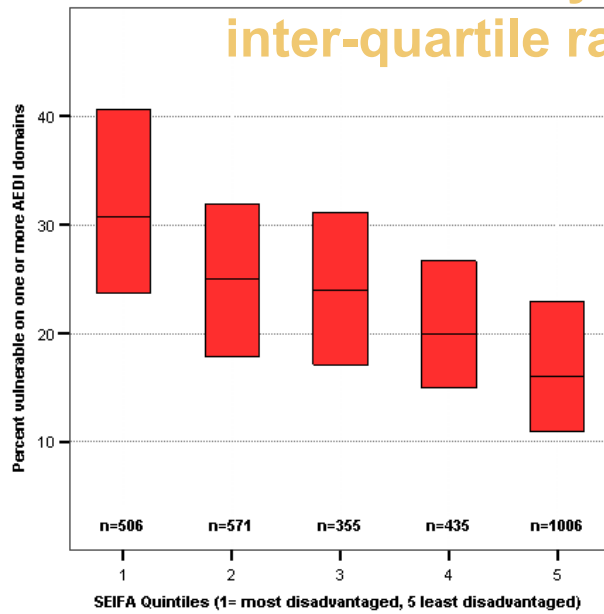
Number: Vulnerability by Indigenous and SEIFA



Blue = Vulnerable on one or more domains,
Purple = No vulnerability



Local Community results inter-quartile range



The Developmental Status of Children in WA and the magnitude of the gap between Indigenous and Non-Indigenous children by the Physical Sub-domains.

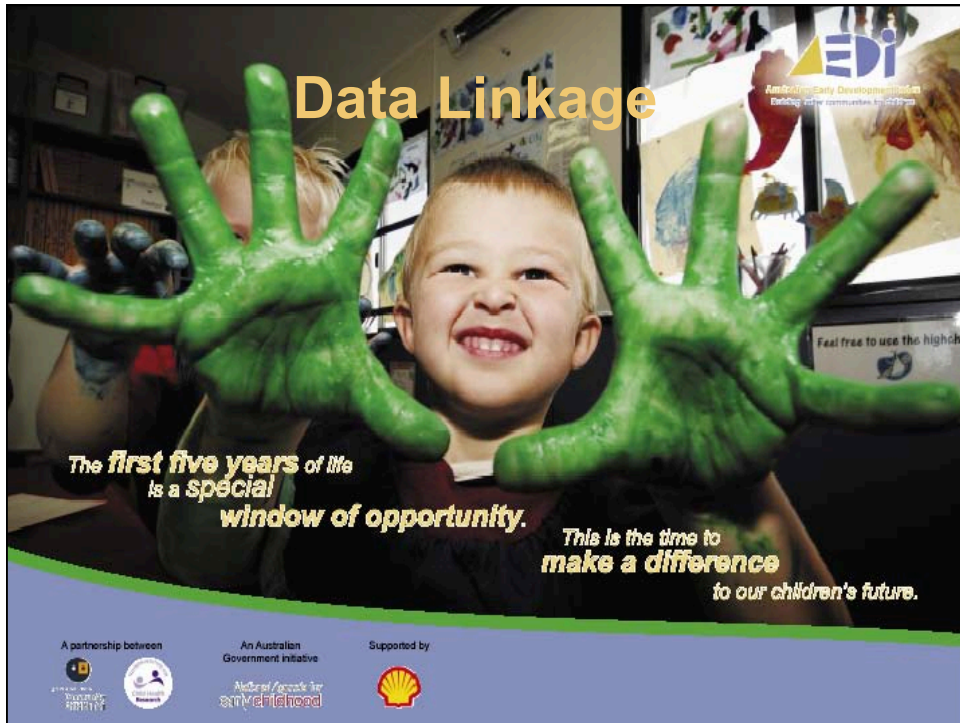
Non -Indigenous	On Track (% and no.)	At Risk (% and no.)	Vulnerable (% and no.)
Physical Health and wellbeing	76.1% (19510)	11.9% (2888)	9.2% (2223)
- <i>Physical readiness for school</i>			8.6% (2082)
- <i>Physical Independence</i>			9.9% (2401)
- <i>Fine and Gross Motor Skills</i>			5.9% (1430)
Indigenous	On Track (% and no.)	At Risk (% and no.)	Vulnerable (% and no.)
Physical Health and wellbeing	59.9% (941)	15.4% (241)	24.7% (387)
- <i>Physical readiness for school</i>			33.6% (527)
- <i>Physical Independence</i>			10.8% (170)
- <i>Fine and Gross Motor Skills</i>			10.1% (158)

What does all this tell us?

- The picture is significantly more complex than simply targeting geographically poor regions if we want to improve child development and reduce child development inequality.
- How can we as researchers help further enlighten policy makers around getting the right mix of targeted and universal services?



Data Linkage



The first five years of life is a special window of opportunity.

This is the time to make a difference to our children's future.

EDI
Early Developmental Index
Building the foundations for life

Feel free to use the highchairs

A partnership between
DEPARTMENT OF EDUCATION
DEPARTMENT OF HEALTH

An Australian Government initiative
Minister for Families and Community Services
Department of Families, Housing, Community Services and Indigenous Affairs

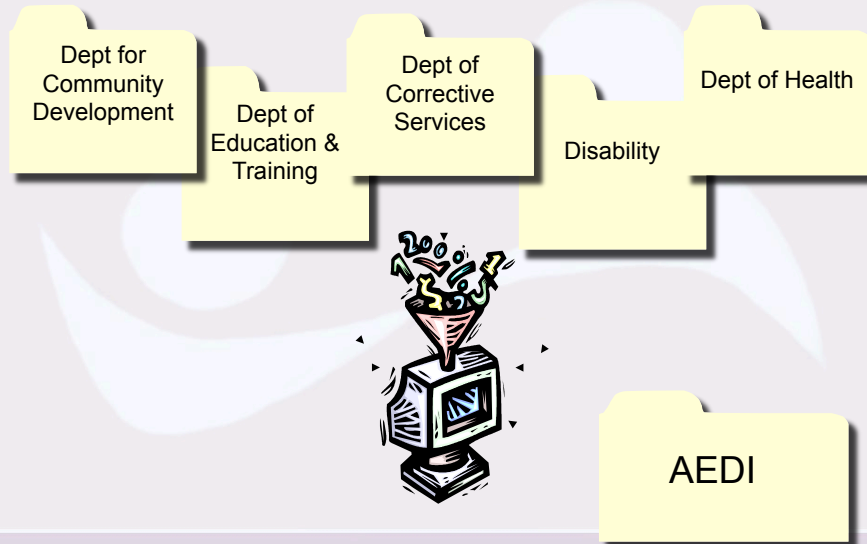
Supported by
SHELL

Data linkage without consent?

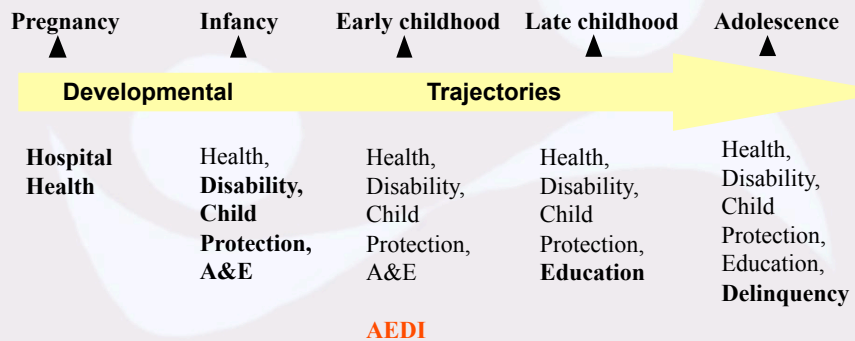
- NHMRC Guidelines
 - Record linkage without consent is permitted
 - Public interest of research
- vs. Public right to privacy



How are we going to do it?



Data Linkage



Data Linkage Projects Funded involving the AEDI

- Predictive validity of the AEDI
- Brain Injury
- FACS Notifications
- Intergenerational health
- Early predictors of mental health
- ECD risk profile
- Dental Health
- National Schools Intervention
- Ritalin
- LSAC/LSIC



Where does the science go now

- Data linkage provides a unique opportunity to progress the field by understanding both the socio-economic drivers of child development and the inequality in child development itself at a population level.
- What are the drivers and thus the risk and resilience predictors of child development beyond socioeconomic factors.
- Inform “proportionate universalism”



Australian Early Development Index
Building better communities for children